



WALLS

Feature Wood Coverings

Caladium Collection

CLOVER SERIES

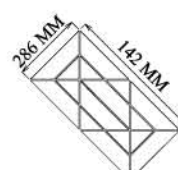
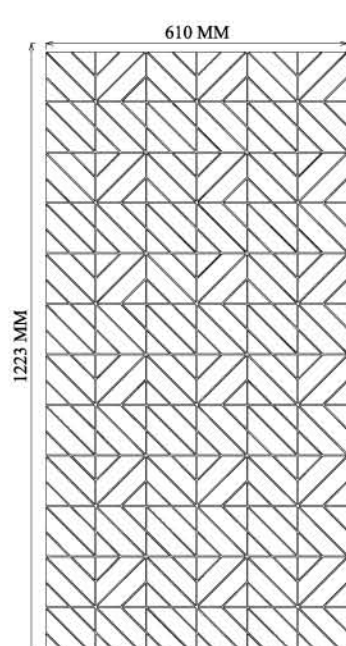
CLOVER

Clover is an astonishing design that creates a marvelous geometry in wood cladding. Unique by its distinctive placement pattern; Clover series point towards the zenith in interiors.



TECHNICAL DETAILS

Wood Pieces Per Panel	: 288
Weight per Panel	: 2.5 kg
Groove Size (mm)	: 2.5 mm
Out-to-Out Panel Size (mm)	: 1223 mm X 610 mm
Out-to-In Panel Size (mm)	: 1223 mm X 610 mm
Coverage in Square Feet	: 8
Thickness of Wood (mm)	: 6 mm
Backing	: Polyester Fabric
Finish	: Raw



Scan me



Product picture shown here is for representation purpose only.
Actual color may vary from batch to batch.

Product Code : CLV-01.3

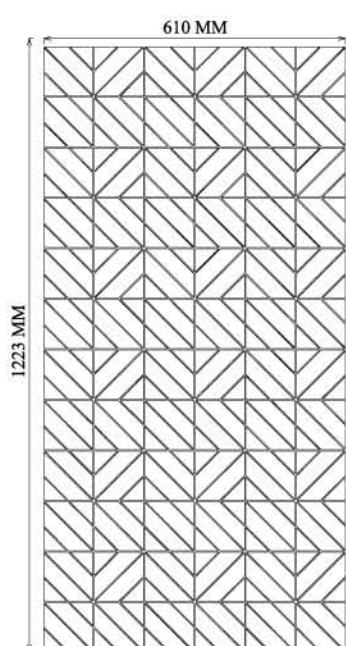
CLOVER

Clover is an astonishing design that creates a marvelous geometry in wood cladding. Unique by its distinctive placement pattern; Clover series point towards the zenith in interiors.

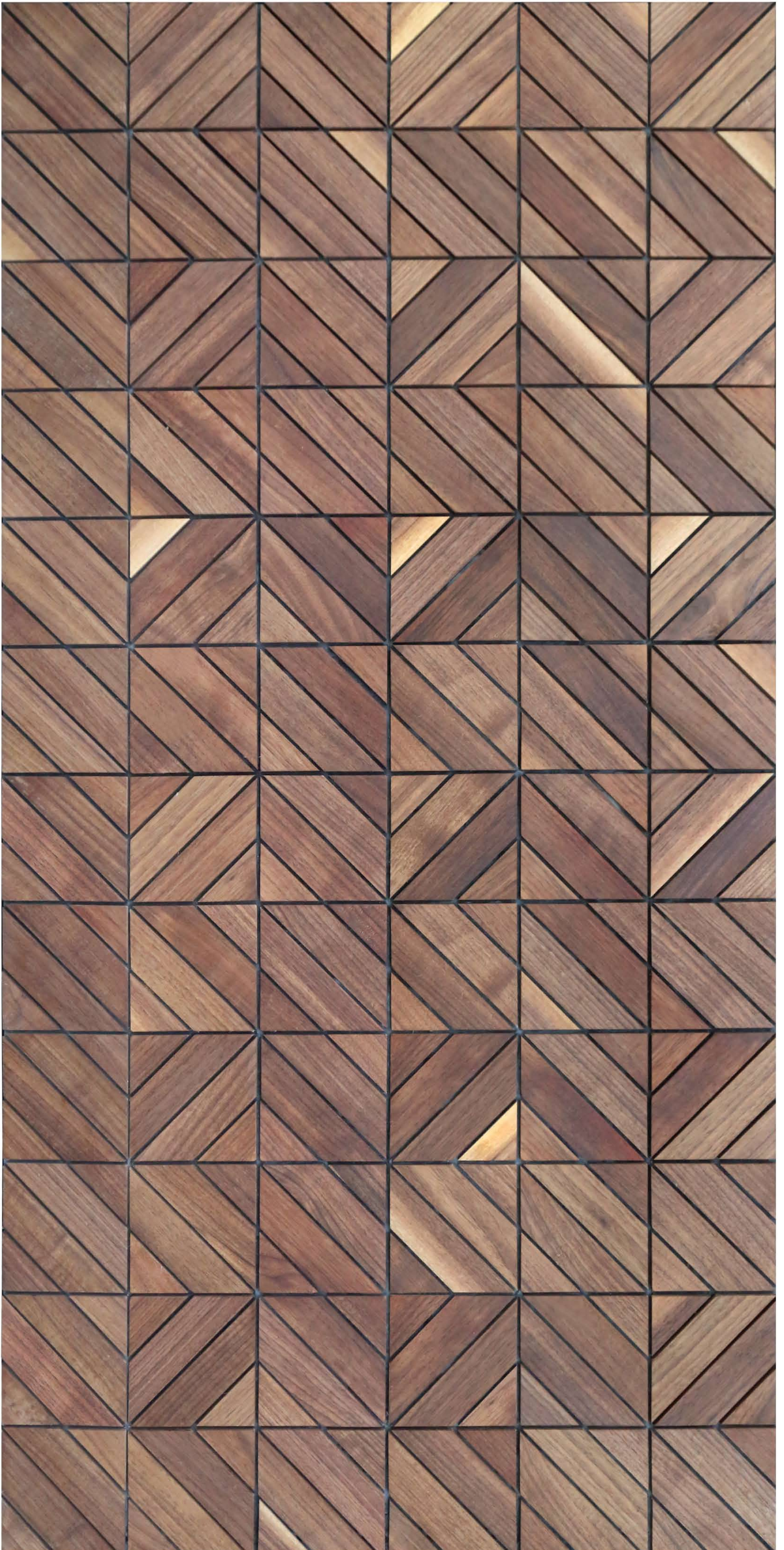


TECHNICAL DETAILS

Wood Pieces Per Panel	: 288
Weight per Panel	: 2.5 kg
Groove Size (mm)	: 2.5 mm
Out-to-Out Panel Size (mm)	: 1223 mm X 610 mm
Out-to-In Panel Size (mm)	: 1223 mm X 610 mm
Coverage in Square Feet	: 8
Thickness of Wood (mm)	: 6 mm
Backing	: Polyester Fabric
Finish	: Raw



Scan me



Product picture shown here is for representation purpose only.
Actual color may vary from batch to batch.

Product Code : CLV-02.0

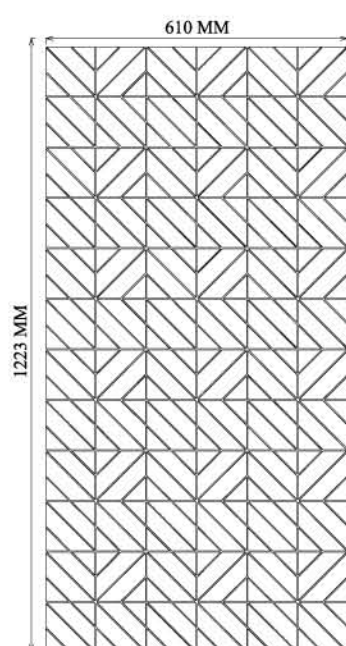
CLOVER

Clover is an astonishing design that creates a marvelous geometry in wood cladding. Unique by its distinctive placement pattern; Clover series point towards the zenith in interiors.

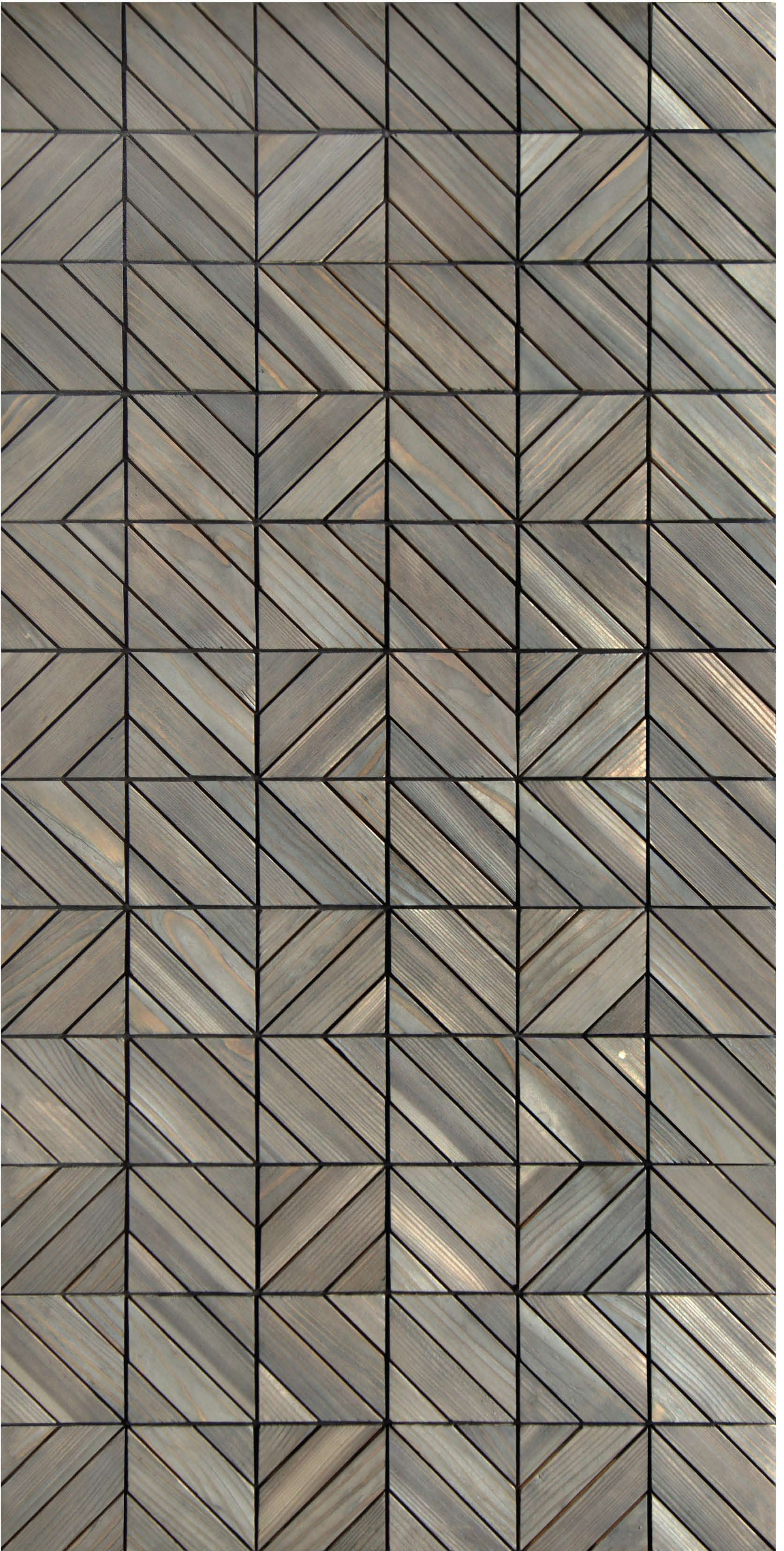


TECHNICAL DETAILS

Wood Pieces Per Panel	: 288
Weight per Panel	: 2.5 kg
Groove Size (mm)	: 2.5 mm
Out-to-Out Panel Size (mm)	: 1223 mm X 610 mm
Out-to-In Panel Size (mm)	: 1223 mm X 610 mm
Coverage in Square Feet	: 8
Thickness of Wood (mm)	: 6 mm
Backing	: Polyester Fabric
Finish	: Raw



Scan me



Product picture shown here is for representation purpose only.
Actual color may vary from batch to batch.

Product Code : CLV-03.2

How to Apply ?

Please follow the application instructions for hassle free installation and maintenance-

1. Provide a completely dry and leveled surface for mounting "TD Walls" Panels. Liner materials such as 6 mm BWP plywood or 6 mm WPC sheets can be used for levelling purposes.
2. If "TD Walls" Panels are mounted directly onto walls (without liner material like plywood or WPC), ensure zero water seepage from the wall.
3. Applications in wet areas or excessively moist areas are not advisable.
4. Any standard glue (substrate to be considered) can be used for mounting "TD Walls" Panels. For standard installations on plywood surfaces standard PVAc white glues are recommended.
5. Always insist on using 2.5 mm spacers while laying out individual pieces next to each other.
6. Spacers should be used on all four sides to finalize placement before applying pressure mechanism to the surface.
7. Always insist on applying uniform pressure on surfaces when liquid white glues are used.
8. Maintain uniform pressure on the surface until the glue dries out completely. It is recommended to provide 6-8 hours curing time for the glue.
9. Please consider ability to apply uniform pressure in applications on curved surfaces.
10. Do not sand heavily for lacquering immediately after application.
11. Allow the water based glues to dry out completely before filling the grooves with grouting material.
12. Apply two sealer coats of standard polyurethane wood sealer by spray gun on the wood surface before using any grouting material. Spray application is mandatory. Roller application is not advisable.
13. Discoloration of wood is possible in case of inappropriate application of base sealer coat; before grouting is done.
14. Epoxy grouts are highly recommended for its water resistance property.
15. Clean the surface thoroughly with a moist cloth after filling grouting material to avoid grout remnants on the surface.
16. Cleaning the grout needs to be timed correctly. Grout should harden slightly before cleaning; but should not be allowed to cure completely.
17. Apply final top coats of standard polyurethane wood coatings for finishing the wood surface after cleaning the surface thoroughly.
18. Standard wood coatings used for veneer/wood surfaces are good for "TD Walls" Panels as well.



Scan this code for how to apply "Wall" video



Scan this code for how to apply "Floor" video

Care

1. Always clean with dry or moist cloth.
2. Avoid cleaning with excessively wet cloths.
3. Avoid highly acidic cleaning agents.
4. Water borne wood cleaning soaps can be used periodically for cleaning.
5. Avoid direct water contact or water logging for long duration on the wood surface.

'TD Walls' Panels installation procedure for wall claddings



Step-1: Provide a dry & levelled wall surface



Step-2: Apply liner material



Step-3: Apply glue to product



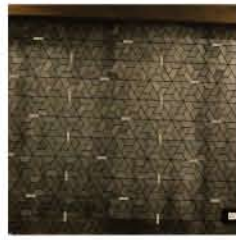
Step-4: Apply glue to liner material



Step-5: Install panels



Step-6: Use spacers for interlocking panels



Step-7: Apply pressure mechanism



Step-8: Allow glue to dry & cure

'TD Walls' Panels installation procedure for floor applications



Step-1: Apply liner material



Step-2: Apply glue to product



Step-3: Apply glue to liner material on floor



Step-4: Install panels



Step-5: Use spacers for interlocking panels



Step-6: Apply pressure mechanism



Step-7: Allow glue to dry & cure before proceeding further



Step-8: Spray 2 coats of standard polyurethane wood sealer coatings



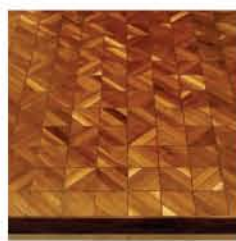
Step-9: Fill epoxy grout material



Step-10: Clean excess grout from wood surface



Step-11: Use polyurethane top coats to finish the surface



Step-12: Allow top coat to dry before final sanding & finishing



Scan me

TURAKHIA DECOR LLP

[f](#) /turakhiadecor
[t](#) /turakhiadecor
[y](#) /turakhiadecor

[p](#) /turakhiadecor
[i](#) /turakhiadecor
[in](#) /company/turakhiadecor

[t](#) +91 72039 00235
[e](#) info@turakhiadecor.com
[g](#) www.turakhiadecor.com